



Credit Report on **TAYLOR LOGISTICS INC**

Legal Name	TAYLOR LOGISTICS, INC.		MC-Number	448473
Business Name	TAYLOR LOGISTICS INC			
Billing Address	2875 EAST SHARON RD CINCINNATI , OH 45241-1976	Physical Address	2875 EAST SHARON RD CINCINNATI , OH 45241	
Telephone	1-513-773-2118	Toll-Free	1-800-486-0015	
Fax	1-513-672-8549	Fed ID	04-3720335	
Ownership	CORPORATION		Established	MC-Number Issued 4/2003
Business Type	TRANSPORTATION BROKER	Bond Per STB	YES	Branches
Warehouse	# of Employees	UNAVAILABLE	Affiliates	
SEE REMARKS				

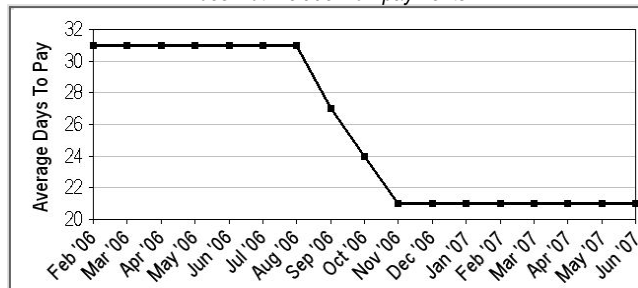
Company Officers: **REX TAYLOR, PRESIDENT** **JOHN A TAYLOR, VICE PRESIDENT**
 Information Provided By: **DENISE CLIFT, ACCOUNTS PAYABLE**

Remarks: DENISE W/ TAYLOR LOGISTICS INC DECLINED TO PROVIDE ADDTL CURRENT CARRIER REFS AT THIS TIME. ASSOC COS: TAYLOR WAREHOUSE; TAYLOR DISTRIBUTING COMPANY #022276 (RPT).

CREDIT SUMMARY

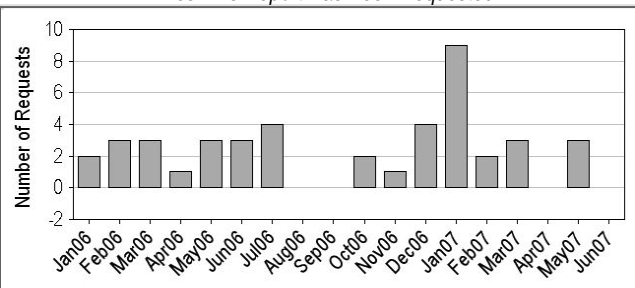
6 credit references reported with an average high credit of **\$3,400.00**, and *average days for payment are **19** days
Calculated per account, not per load

HISTORICAL AVERAGE DAYS TO PAY
Does Not Include Non-payments



ACTIVITY GRAPH

Times This Report Has Been Requested



CREDIT REFERENCES

Credit references listed with non-payment complaints first, if any, and most recent business next.

Creditor	WALTERS TRUCKING INC	Opened	8/5/2006	*Average Days	19	NSF	Collections	Terms	30
Location	SAUK CENTRE , MN								
Phone	1-320-352-2207	MC#	219451						
Contact	COLLEEN	Contact		Last Sale	6/16/2007	# Loads	18	Recent High Credit	12,800
		Email				Account Balance	12,800		

Remarks: Last Updated On: 6/29/2007

Creditor	COASTAL CARRIERS TRUCK LINES INC	Opened	10/6/2006	*Average Days	7	NSF	Collections	Terms	30
Location	TROY , MO								
Phone	1-877-848-8726	MC#	380631						
Contact	Electronic	Contact		Last Sale	4/6/2007	# Loads	6	Recent High Credit	1,800
		Email				Account Balance	0		

Remarks: Last Updated On: 7/1/2007

Creditor	WITTE BROTHERS EXCHANGE INCORPORATED	Opened	2/6/2007	*Average Days	30	NSF	Collections	Terms	30
Location	TROY , MO								
Phone	1-800-325-8151	MC#	125299						
Contact	SYL	Contact		Last Sale	3/28/2007	# Loads	2	Recent High Credit	1,000
		Email				Account Balance	0		

Remarks: Last Updated On: 7/6/2007

Creditor	NORSEMEN TRUCKING INC	Opened	1/25/2007	*Average Days	18	NSF	Collections	Terms	30
Location	LAKE MILLS , IA								
Phone	1-800-533-0510	MC#	217470						
Contact	KARI	Contact		Last Sale	1/25/2007	# Loads	1	Recent High Credit	900
		Email				Account Balance	0		

Remarks: Last Updated On: 4/18/2007

<i>Creditor</i>	BENNETT FROZEN FREIGHT	<i>Opened</i>	7/15/2006	<i>*Average Days</i>	18	<i>NSF</i>	<i>Collections</i>	<i>Terms</i>	30
<i>Location</i>	JEFFERSONVILLE , IN								
<i>Phone</i>	1-812-284-3263	<i>MC#</i>	275363						
<i>Contact</i>	CATHERINE	<i>Contact Email</i>		<i>Last Sale</i>	10/10/2006	<i># Loads</i>	11	<i>Recent High Credit</i>	2,400
								<i>Account Balance</i>	0

Remarks:

Last Updated On: 2/15/2007

<i>Creditor</i>	STEPHENS TRUCKING CO INC, O	<i>Opened</i>	10/19/2005	<i>*Average Days</i>	26	<i>NSF</i>	<i>Collections</i>	<i>Terms</i>	30
<i>Location</i>	FLEMINGSBURG , KY								
<i>Phone</i>	1-606-849-4238	<i>MC#</i>	191572						
<i>Contact</i>	GARNETTA	<i>Contact Email</i>		<i>Last Sale</i>	8/3/2006	<i># Loads</i>	3	<i>Recent High Credit</i>	1,500
								<i>Account Balance</i>	0

Remarks:

Last Updated On: 7/6/2007

DUN & BRADSTREET PAYDEX®

The **D&B PAYDEX®** is a unique, dollar weighted indicator of payment performances based on up to 211 payment experiences as reported to Dun & Bradstreet by trade references.

Current D&B PAYDEX®: 80

Current D&B PAYDEX®: 80

EXPERIAN BUSINESS INFORMATION			
<i>Experian Score:</i>	74.55	<i>Score Factors (Top factors in determining the Experian Score):</i>	<i>Years on File</i>
<i>0 (High Risk) to 100 (Low Risk)</i>		* Number of trades with a high balance to high credit ratio	4 Year(s)
		* Number of recently active accounts	
		* Ratio of balance on slow paying accounts to all balances	
<i>Trade Acct Balance</i>	\$4,300	<i>Combined DBT (The total number of Days Beyond Terms for all trade lines on business):</i>	3 Day(s)
<i>Number of Combined Trade Lines (This is a count of the number of new and continuously reported trade lines for the business):</i>			5

NO BANKRUPTCY, JUDGMENT OR LIEN INFORMATION ON FILE

BOND INFORMATION			
<i>Insurance</i>	OHIO FARMERS INSURANCE COMPANY	<i>Location</i>	ONE PARK CIRCLE, PO
<i>Phone</i>	3308870101	<i>City/State</i>	WESTFIELD CENTER OH 44251
<i>Contact</i>	RHONDA BROMLEY- FILING DESK	<i>Policy#</i>	5943416
		<i>Effective Date</i>	12/30/2002

The information herein is furnished in confidence for your exclusive use for legitimate purposes and shall not be reproduced. Neither CompuNet Credit Services, Inc. nor its sources or distributors warrant such information nor shall they be liable for your use or reliance upon it.

***AVERAGE NUMBER OF DAYS IN WHICH PAYMENT IS RECEIVED, AS REPORTED BY CREDIT REFERENCE PROVIDER.**

Copyright 2007 First Advantage Transportation Services
800-872-3748